



IDC5
SOFTWARE
UPDATE

CAR 76.6.3



September 2024

IDC5 CAR 76.6.3

The **IDC5 CAR 76.6.3** software update includes, once again, a large number of developments, the best of TEXA's multi-brand diagnosis dedicated to cars and light commercial vehicles. Using **IDC5 CAR** during your daily workshop activities means having an avant-garde solution, rich in new diagnostic possibilities, special functions and technical information that are essential for completing even the most complex workshop operations professionally and with full customer satisfaction.

IDC5 CAR 76.6.3 includes the update of as many as **41 makes**. The work of TEXA's technical developers also led to further increasing the coverage of the **ADAS, electric and hybrid vehicles, interactive "DASHBOARD" screens** with over **170** new possible selections, and **wiring diagrams**.

IDC5 CAR 76.6.3 is characterised by over 4100 new possible selections for the major makes on the market worldwide, among which: **ABARTH, ACURA, ALFA ROMEO, ASTON MARTIN, AUDI, BENTLEY, BMW, BUICK, BYD, CADILLAC, CHERY, CHEVROLET, CHRYSLER, CITROËN, CUPRA, DACIA, DAIHATSU, DATSUN, DODGE, DR, DS, EVO, FERRARI, FIAT, FISHER, FORD, GENESIS, GMC, GREAT WALL, HOLDEN, HONDA, HUMMER, HYUNDAI, INEOS, INFINITI, ISUZU, JAGUAR, JEEP, KG MOBILITY, KIA, LADA, LANCIA, LAND ROVER, LAMBORGHINI, LDV, LEXUS, LINCOLN, LOTUS, LYNK & CO, MAXUS, MAYBACH, MASERATI, MAZDA, MCLAREN, MERCEDES-BENZ, MERCURY FORD, MG, MINI, MITSUBISHI, NISSAN, OPEL, PEUGEOT, POLESTAR, PONTIAC, PORSCHE, RAM, RAVON, RENAULT, SAMSUNG, ROEWE, ROLLS-ROYCE, SAAB, SATURN, SCION, SEAT, SKODA, SPORTEQUIPE, SMART, SSANGYONG, SUBARU, SUZUKI, TATA, TESLA, TOYOTA, TROLLER, UAZ, VENUZIA, VOLKSWAGEN, VOLVO.**

To learn more about the extraordinary coverage made available by TEXA, visit the website:

www.texa.com/coverage

LATEST IDC5 CAR VERSION UPDATE

In the **"Latest version application list"** section users can find the updates related to the diagnostic coverage available in the **IDC5 CAR** software (Image 1).

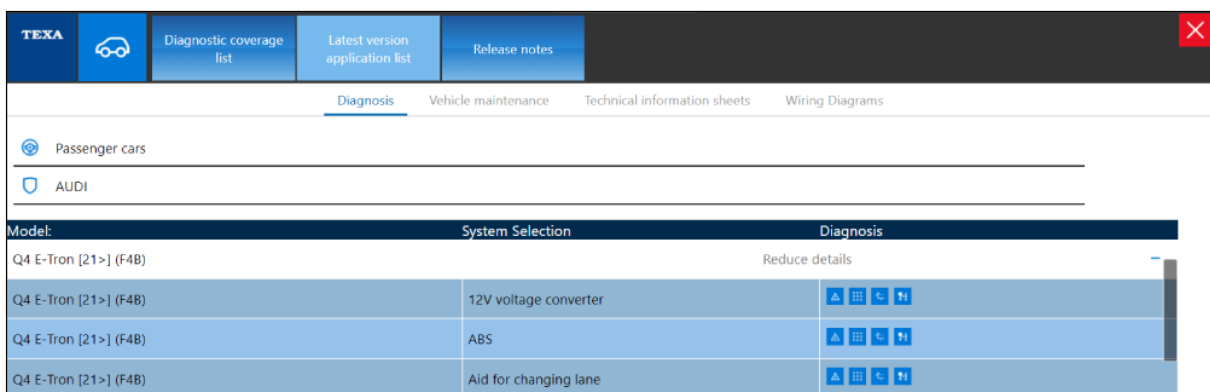


Image 1 - News section in IDC5

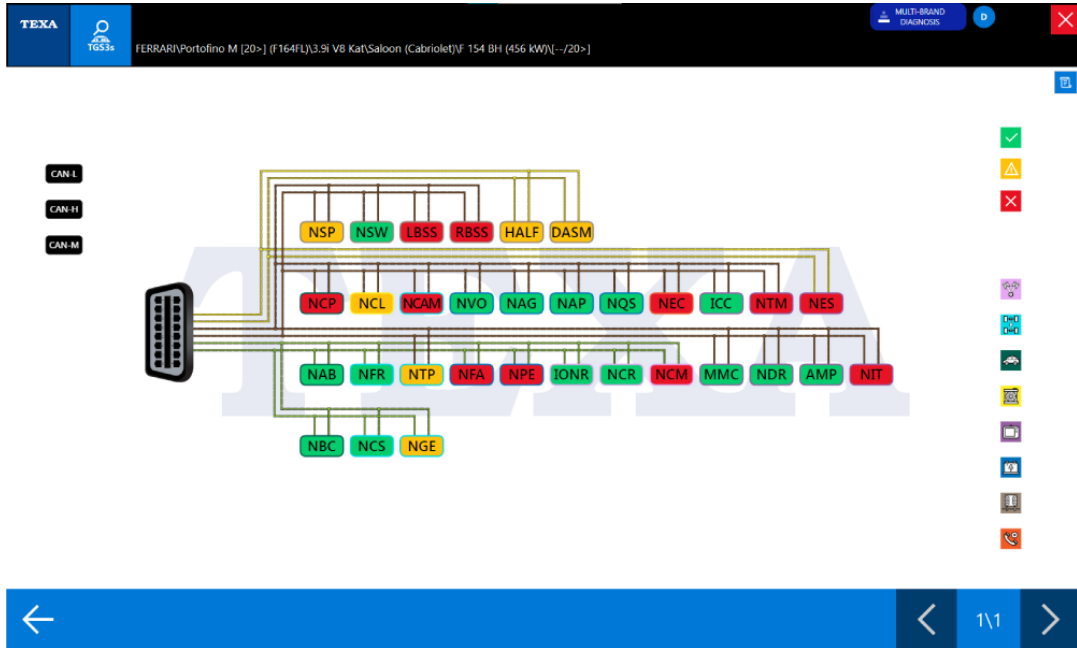
NOTE: For further information see our website WWW.TEXA.COM in the DIAGNOSTIC COVERAGE section.

NEW FEATURES INCLUDED IN THE IDC5 CAR 76.6.3 VERSION

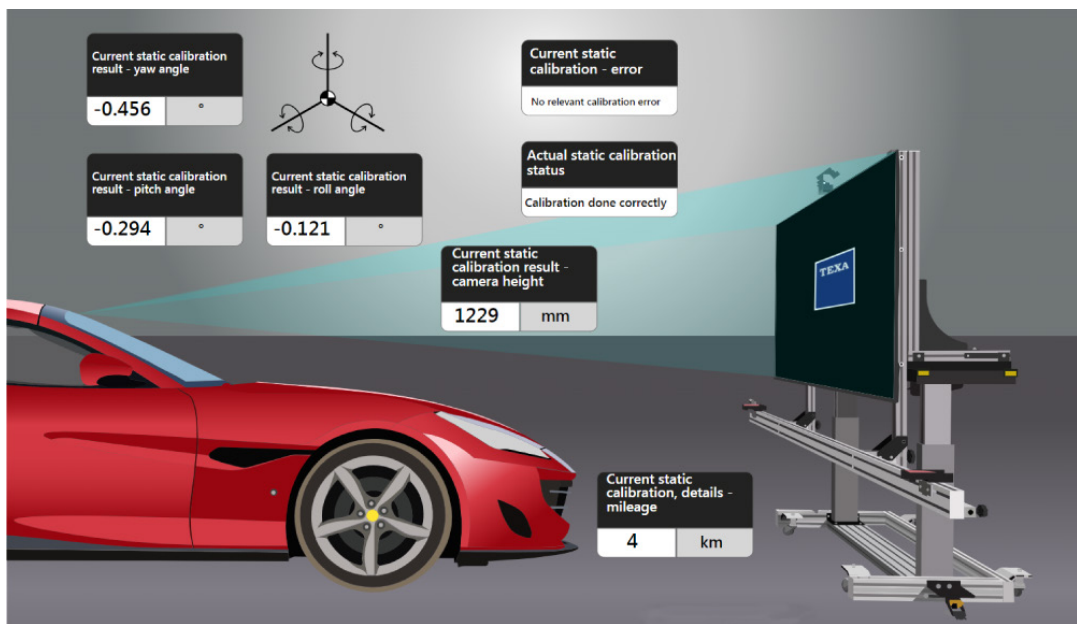
DIAGNOSTIC DASHBOARDS AND TGS3 DASHBOARDS

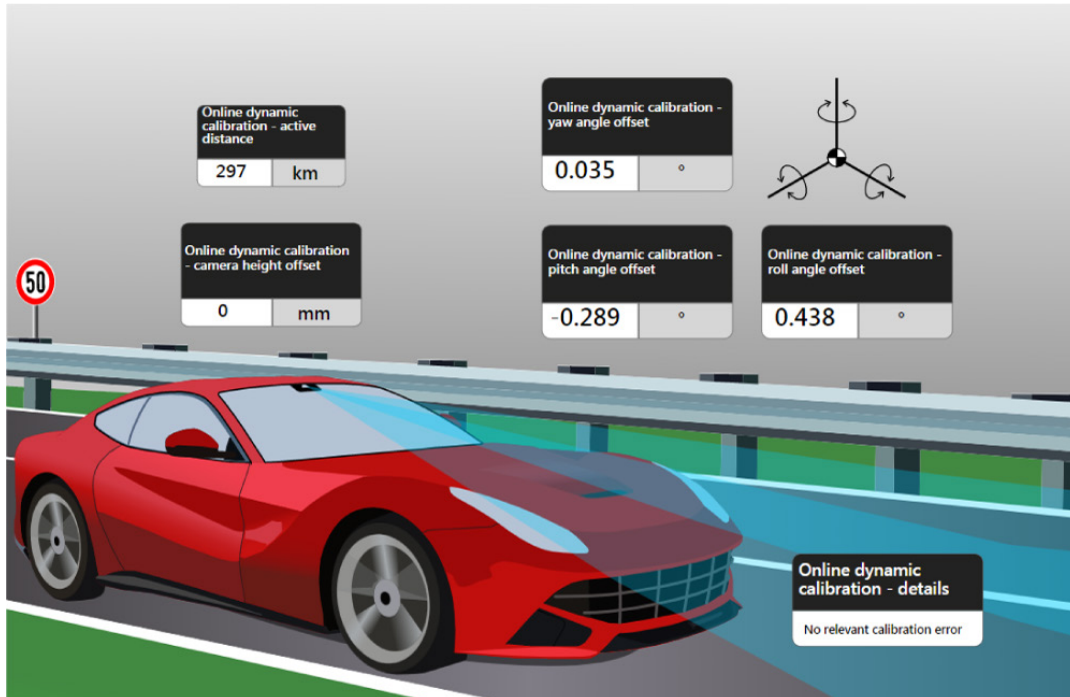
New **TGS3 DASHBOARDS** have been added for **FERRARI** vehicles.

Below are a few example images:



New **PARAMETER DASHBOARDS** have been added for **FERRARI** vehicles.





DIAGNOSIS

CAR

AUDI

A new diagnostic system has been developed for the model **A1 [19>] (GBA) Sportback**:

- ABS
- AIRBAG
- PARK ASSIST
- LANE CHANGE ASSIST
- AUTOMATIC TRANSMISSION
- A/C
- DISTANCE CONTROL
- GATEWAY
- PETROL INJECTION
- SUSPENSIONS
- MULTIFUNCTION CAMERA
- REAR-VIEW CAMERA

A new diagnostic system has been developed for the model **A1 [20>] (GBH) Citycarver**:

- ABS
- AIRBAG
- PARK ASSIST

- LANE CHANGE ASSIST
- AUTOMATIC TRANSMISSION
- A/C
- DISTANCE CONTROL
- GATEWAY
- PETROL INJECTION
- SUSPENSIONS
- MULTIFUNCTION CAMERA
- REAR-VIEW CAMERA

A new diagnostic system has been developed for the model **Q4 E-Tron [21>] (F4B)**:

- ABS
- AIRBAG
- PARK ASSIST
- LANE CHANGE ASSIST
- ENGINE SOUND ACTUATOR
- STEERING LOCK
- HIGH-VOLTAGE CHARGING CABLE 1
- ELECTRIC MOTOR CONTROL UNIT
- A/C
- DISTANCE CONTROL
- 12V VOLTAGE CONVERTER
- GATEWAY
- BATTERY CONTROL MODULE
- BATTERY CHARGER CONTROL MODULE
- DEVICE 1 CHARGING MODULE
- SUSPENSIONS
- MULTIFUNCTION CAMERA
- REAR-VIEW CAMERA
- ELECTRIC DRIVE
- ELECTRIC DRIVE 2

A new diagnostic system has been developed for the model **Q4 E-Tron [21>] (F4N) Sportback**:

- ABS
- AIRBAG
- PARK ASSIST
- LANE CHANGE ASSIST
- ENGINE SOUND ACTUATOR
- STEERING LOCK
- HIGH-VOLTAGE CHARGING CABLE 1
- ELECTRIC MOTOR CONTROL UNIT
- A/C

- DISTANCE CONTROL
- 12V VOLTAGE CONVERTER
- GATEWAY
- BATTERY CONTROL MODULE
- BATTERY CHARGER CONTROL MODULE
- DEVICE 1 CHARGING MODULE
- SUSPENSIONS
- MULTIFUNCTION CAMERA
- REAR-VIEW CAMERA
- ELECTRIC DRIVE
- ELECTRIC DRIVE 2

A new diagnostic system has been developed for the model **Q8 [18>] (4MN)**:

- ABS
- AIRBAG
- LANE CHANGE ASSIST
- LANE CHANGE ASSIST 2
- AUTOMATIC TRANSMISSION
- HIGH-VOLTAGE CHARGING CABLE 1
- TELEMETRIC DIAGNOSIS CONTROL UNIT
- A/C
- DISTANCE CONTROL
- DC/DC CONVERTER
- HIGH VOLTAGE CONVERTER
- HIGH VOLTAGE CONVERTER 2
- GATEWAY
- INJECTION 3/BATTERY 2 CONTROL MODULE
- PETROL INJECTION
- LASER SCANNER
- BATTERY CONTROL MODULE
- BATTERY CHARGER CONTROL MODULE
- TYRE PRESSURE
- FRONT CORNER RADAR 1
- FRONT CORNER RADAR 2
- AUXILIARY BATTERY 1 CONTROL
- SUSPENSIONS
- HIGH VOLTAGE BATTERY CHARGING SYSTEM 2
- MULTIFUNCTION CAMERA
- REAR-VIEW CAMERA
- ELECTRIC DRIVE
- ELECTRIC DRIVE 2
- ELECTRIC TRACTION 3



CAR 76.6.3



BMW

A new diagnostic system has been developed for the model **1 [24>] (F70)**:

- PETROL INJECTION
- DIESEL INJECTION
- STABILITY SENSORS

BUICK

A new diagnostic system has been developed for the model **Envision [21>]**:

- PARK ASSIST
- STEERING LOCK
- VEHICLE POSITION RECOGNITION SYSTEM

CADILLAC

A new diagnostic system has been developed for the model **Celestiq [24>]**:

- RESCUE CALL
- INFOTAINMENT INTERFACE
- POWER STEERING
- VEHICLE POSITION RECOGNITION SYSTEM
- NIGHT VISION SYSTEM

A new diagnostic system has been developed for the model **XT4 [24>] Facelift**:

- A/C
- PETROL INJECTION
- INFOTAINMENT INTERFACE
- REAR DIFFERENTIAL CLUTCH CONTROL MODULE
- RIGHT SIDE OBSTACLE DETECTION CONTROL UNIT
- POWER STEERING
- PARKING AID CAMERAS

CHEVROLET

A new diagnosis of the **RESCUE CALL** system has been developed for the models:

- Corvette C7 ZR1 [19>19] Convertible
- Corvette C7 ZR1 [19>19] Coupé
- Corvette C7 Z06 [14>19] Coupé
- Corvette C7 Z06 [14>19] Convertible
- Corvette C7 Stingray [14>19] Convertible
- Corvette C7 Stingray [14>19] Coupé
- Trax [24>]
- Blazer EV [24>]
- Equinox EV [24>]
- Traverse [24>]



CAR 76.6.3



A new diagnostic system has been developed for the model **Blazer EV [24>]**:

- PARK ASSIST
- PARK ASSIST
- STEERING LOCK
- POWER STEERING
- PARKING AID CAMERAS

A new diagnostic system has been developed for the model **Corvette C8 [20>] Coupé**:

- ABS
- AIRBAG
- PARK ASSIST
- A/C
- GATEWAY
- PETROL INJECTION
- POWER STEERING
- FRONT AXLE LIFTING
- FRONT CAMERA
- PARKING AID CAMERAS

A new diagnostic system has been developed for the model **Corvette C8 [20>] Convertible**:

- ABS
- AIRBAG
- PARK ASSIST
- A/C
- GATEWAY
- PETROL INJECTION
- POWER STEERING
- FRONT AXLE LIFTING
- FRONT CAMERA
- PARKING AID CAMERAS

A new diagnostic system has been developed for the model **Equinox EV [24>]**:

- PARK ASSIST
- PARK ASSIST
- STEERING LOCK
- POWER STEERING

A new diagnostic system has been developed for the model **Traverse [24>]**:

- STEERING LOCK
- REAR DIFFERENTIAL CLUTCH CONTROL MODULE
- POWER STEERING



CAR 76.6.3



A new diagnosis of the **STEERING ANGLE SENSOR** system has been developed for the models:

- Silverado 1500 [19>21]
- Silverado 2500/3500 [19>23]

A new diagnostic system has been developed for the model **Tahoe [21>]**:

- POWER STEERING
- VEHICLE POSITION RECOGNITION SYSTEM

DACIA

A new diagnostic system has been developed for the model **Sandero II [13>20] (B8)**:

- ABS
- AIRBAG
- BODY COMPUTER
- AUTOMATIC TRANSMISSION
- PETROL INJECTION
- TYRE PRESSURE
- FOUR-WHEEL DRIVE

DR

A new diagnostic system has been developed for the model **DR3.0 [23>]**:

- TRUNK

DS

A new diagnostic system has been developed for the model **DS 3 Crossback [19>] (D34)**:

- STEERING COLUMN SWITCH UNIT

FIAT

A new diagnostic system has been developed for the model **Panda/Pandina [24>] (319) Facelift**:

- AIRBAG
- PETROL INJECTION
- POWER STEERING
- SGW SECURITY GATEWAY MODULE
- INSTRUMENTATION
- FRONT CAMERA

FORD

A new diagnosis of the **POWER STEERING** system has been developed for the models:

- F-Series Super Duty [23>] (P708)
- Mustang VII [23>] (S650) Cabrio
- Mustang VII [23>] (S650) Coupé
- Tourneo/Transit Custom [23>] (V710)
- Tourneo/Transit Courier [24>] (V769)

A new diagnosis of the **BODY COMPUTER** system has been developed for the models:

- F-Series Super Duty [23>] (P708)
- Tourneo/Transit Custom [23>] (V710)
- Tourneo/Transit Courier [24>] (V769)

GMC

A new diagnostic system has been developed for the model **Acadia [24>]**:

- RESCUE CALL
- REAR DIFFERENTIAL CLUTCH CONTROL MODULE
- POWER STEERING

A new diagnosis of the **STEERING ANGLE SENSOR** system has been developed for the models:

- Sierra 1500 [19>21]
- Sierra 2500/3500 [19>23]

A new diagnostic system has been developed for the model **Yukon [21>]**:

- POWER STEERING
- VEHICLE POSITION RECOGNITION SYSTEM
- NIGHT VISION SYSTEM

A new diagnostic system has been developed for the model **Yukon XL [21>]**:

- POWER STEERING
- VEHICLE POSITION RECOGNITION SYSTEM
- NIGHT VISION SYSTEM

HONDA

A new diagnosis of the **BLIND SPOT MODULE** system has been developed for the models:

- HR-V [15>22] (RU)

KG-MOBILITY

A new diagnosis of the **BLIND SPOT MODULE** system has been developed for the models:

- Torres [23>] (J100)

KIA

A new diagnosis of the **GATEWAY** system has been developed for the models:

- EV9 [23>] (MV)
- Sorento IV [24>] (MQ) Facelift

A new diagnosis of the **GEAR SELECTOR LEVER** system has been developed for the models:

- Seltos [19>] (SP2)
- Sorento IV [24>] (MQ) Facelift
- EV9 [23>] (MV)

A new diagnosis of the **HIGH-VOLTAGE BATTERY CHARGE MANAGEMENT** system has been developed for the models:

- EV9 [23>] (MV)

LEXUS

A new diagnostic system has been developed for the model **GX (J25) 550h [23>]**:

- ABS
- AIRBAG
- PARK ASSIST
- ENGINE SOUND ACTUATOR
- APPROACHING VEHICLE SOUND FOR PEDESTRIANS
- BODY COMPUTER (FRONT JUNCTION BOX ELECTRONICS)
- AUTOMATIC TRANSMISSION
- ELECTRIC MOTOR CONTROL UNIT
- A/C
- GATEWAY
- PETROL INJECTION
- BLIND SPOT MODULE
- POWER SOURCE CONTROL
- TYRE PRESSURE
- FRONT CORNER RADAR 1
- FRONT CORNER RADAR 2
- STEERING ANGLE SENSOR
- HYBRID SYSTEM
- FRONT CAMERA
- REAR-VIEW CAMERA
- PARKING AID CAMERAS
- TELEMATIC CONTROL UNIT

A new diagnostic system has been developed for the model **GX 550h | NA**:

- ABS
- AIRBAG
- PARK ASSIST
- ENGINE SOUND ACTUATOR
- APPROACHING VEHICLE SOUND FOR PEDESTRIANS
- BODY COMPUTER (FRONT JUNCTION BOX ELECTRONICS)
- AUTOMATIC TRANSMISSION
- ELECTRIC MOTOR CONTROL UNIT
- A/C
- GATEWAY
- PETROL INJECTION
- BLIND SPOT MODULE

- POWER SOURCE CONTROL
- TYRE PRESSURE
- FRONT CORNER RADAR 1
- FRONT CORNER RADAR 2
- STEERING ANGLE SENSOR
- HYBRID SYSTEM
- FRONT CAMERA
- REAR-VIEW CAMERA
- PARKING AID CAMERAS
- TELEMATIC CONTROL UNIT

A new diagnosis of the **RIGHT EXTERIOR MIRROR** system has been developed for the models:

- NX (A2) 250/260 [21>]
- NX (A2) 200 [21>]
- GX (J25) 550h [23>]
- GX 550h | NA
- NX 450h+ | NA
- NX (A2) 450h+ [21>]
- NX (A2) 400h+ [21>]
- NX 450h+ | NA
- NX 350h | NA
- NX 350 | NA
- NX (A2) 350h [21>]
- ES 300h | NA

A new diagnosis of the **LEFT EXTERIOR MIRROR** system has been developed for the models:

- NX (A2) 250/260 [21>]
- NX (A2) 200 [21>]
- GX (J25) 550h [23>]
- GX 550h | NA
- NX 450h+ | NA
- NX (A2) 450h+ [21>]
- NX (A2) 400h+ [21>]
- NX 450h+ | NA
- NX 350h | NA
- NX 350 | NA
- NX (A2) 350h [21>]
- ES 300h | NA

LINCOLN

A new diagnosis of the **BODY COMPUTER** system has been developed for the models:

- Nautilus [24>] (CDX707)

A new diagnosis of the **POWER STEERING** system has been developed for the models:

- Nautilus [24>] (CDX707)
- Aviator [19>] (U611)

MAZDA

A new diagnosis of the **PARKING AID CAMERAS** system has been developed for the models:

- CX-70 [24>] (KK)
- CX-90 [23>] (KK)

A new diagnosis of the **TELEMATIC CONTROL UNIT** system has been developed for the models:

- CX-70 [24>] (KK)
- CX-90 [23>] (KK)
- CX-50 [22>] (VA)

A new diagnosis of the **BOOT** system has been developed for the models:

- CX-70 [24>] (KK)
- CX-90 [23>] (KK)
- CX-50 [22>] (VA)

MITSUBISHI

A new diagnosis of the **PARKING AID CAMERAS** system has been developed for the models:

- Delica D:2 [15>20] (MB26S/MB36S/MB46S)
- Delica D:2 [21>] (MB27S/MB37S/MB47S)

A new diagnosis of the **ABS** has been developed for the models:

- Delica D:2 [15>20] (MB26S/MB36S/MB46S)
- Delica D:2 [21>] (MB27S/MB37S/MB47S)

NISSAN

A new diagnostic system has been developed for the model **NV300/Primastar Combi [21>] Facelift:**

- ABS
- PARK ASSIST
- BODY COMPUTER
- A/C
- GATEWAY
- DIESEL INJECTION
- NAVIGATOR
- TYRE PRESSURE
- POWER STEERING
- TELEMATIC CONTROL UNIT

A new diagnostic system has been developed for the model **Frontier [21>] (D41)**:

- AIRBAG
- PARK ASSIST
- BODY COMPUTER
- GATEWAY
- TYRE PRESSURE
- FOUR-WHEEL DRIVE

RAM

A new diagnostic system has been developed for the model **1500 [25>] (DT) Facelift**:

- ABS
- PETROL INJECTION
- FORWARD SENSING ADAS SYSTEM

A new diagnostic system has been developed for the model **1500 [11>19] (DS)**:

- ABS
- PETROL INJECTION
- GATEWAY

A new diagnostic system has been developed for the model **1500 [19>24] (DS) Classic**:

- POWER STEERING

A new diagnostic system has been developed for the model **Rampage [23>]**:

- AUDIO AMPLIFIER SYSTEM

RENAULT

A new diagnostic system has been developed for the model **Trafic III Combi [21>] Facelift**:

- ABS
- PARK ASSIST
- BODY COMPUTER
- A/C
- GATEWAY
- DIESEL INJECTION
- TYRE PRESSURE
- POWER STEERING
- COMFORT SYSTEM
- INSTRUMENTATION
- TELEMATIC CONTROL UNIT

SKODA

A new diagnostic system has been developed for the model **Superb B9 [24>] (NZ3)**:

- STEERING LOCK

- TRAILER CONTROL UNIT
- RESCUE CALL
- A/C
- DISTANCE CONTROL
- DC/DC CONVERTER
- GATEWAY
- PETROL INJECTION
- DIESEL INJECTION
- DEVICE 1 CHARGING MODULE
- ADDITIONAL ENGINE HEATING
- SHORT-RANGE RADAR SENSOR 1
- SHORT-RANGE RADAR SENSOR 2
- SHORT-RANGE RADAR SENSOR 3
- SHORT-RANGE RADAR SENSOR 4
- REAR MONITORING CAMERA
- MULTIFUNCTION CAMERA
- REAR-VIEW CAMERA
- CENTRE ELECTRIC SUNROOF

A new diagnostic system has been developed for the model **Superb B9 [24>] (NZ5) Wagon**:

- STEERING LOCK
- TRAILER CONTROL UNIT
- RESCUE CALL
- A/C
- DISTANCE CONTROL
- DC/DC CONVERTER
- GATEWAY
- PETROL INJECTION
- DIESEL INJECTION
- DEVICE 1 CHARGING MODULE
- ADDITIONAL ENGINE HEATING
- SHORT-RANGE RADAR SENSOR 1
- SHORT-RANGE RADAR SENSOR 2
- SHORT-RANGE RADAR SENSOR 3
- SHORT-RANGE RADAR SENSOR 4
- REAR MONITORING CAMERA
- MULTIFUNCTION CAMERA
- REAR-VIEW CAMERA
- CENTRE ELECTRIC SUNROOF

SPORTEQUIPE

A new diagnosis of the **BOOT** system has been developed for the models:



CAR 76.6.3



- S6 [23>]
- S7 [23>]
- S8 [23>]

SSANGYONG

A new diagnosis of the **BLIND SPOT MODULE** system has been developed for the models:

- Torres [22>23] (J100)

SUZUKI

A new diagnosis of the **ABS** has been developed for the models:

- Solio [15>20] (MA26S/MA36S/MA46S)
- Solio [21>] (MA27S/MA37S/MA47S)

A new diagnosis of the **PARKING AID CAMERAS** system has been developed for the models:

- Solio [15>20] (MA26S/MA36S/MA46S)
- Solio [21>] (MA27S/MA37S/MA47S)

TOYOTA

A new diagnostic system has been developed for the model **Camry [24>] (XV8)**:

- ABS
- AIRBAG
- PARK ASSIST
- APPROACHING VEHICLE SOUND FOR PEDESTRIANS
- HYBRID BATTERY
- BODY COMPUTER
- BODY COMPUTER (JUNCTION BOX ELECTRONICS)
- ELECTRIC MOTOR CONTROL UNIT
- A/C
- GATEWAY
- PETROL INJECTION
- BLIND SPOT MODULE
- POWER SOURCE CONTROL
- TYRE PRESSURE
- RADAR
- FRONT CORNER RADAR 1
- FRONT CORNER RADAR 2
- STEERING ANGLE SENSOR
- POWER STEERING
- HYBRID SYSTEM
- FRONT CAMERA
- REAR-VIEW CAMERA
- PARKING AID CAMERAS



CAR 76.6.3



- TELEMATIC CONTROL UNIT

A new diagnostic system has been developed for the model **C-HR [23>] (X20)**:

- ABS
- AIRBAG
- PARK ASSIST
- APPROACHING VEHICLE SOUND FOR PEDESTRIANS
- HYBRID BATTERY
- BODY COMPUTER
- BODY COMPUTER (JUNCTION BOX ELECTRONICS)
- ELECTRIC MOTOR CONTROL UNIT
- A/C
- EV CONTROL SYSTEM
- GATEWAY
- PETROL INJECTION
- BATTERY CHARGER CONTROL MODULE
- SECOND BATTERY CONTROL MODULE
- BLIND SPOT MODULE
- POWER SOURCE CONTROL
- TYRE PRESSURE
- RADAR
- FRONT CORNER RADAR 1
- FRONT CORNER RADAR 2
- STEERING ANGLE SENSOR
- POWER STEERING
- FRONT CAMERA
- PARKING AID CAMERAS
- TELEMATIC CONTROL UNIT

A new diagnostic system has been developed for the model **Yaris Cross [23>] (AC200)**:

- ABS
- AIRBAG
- PARK ASSIST
- HYBRID BATTERY
- BODY COMPUTER
- AUTOMATIC TRANSMISSION
- ELECTRIC MOTOR CONTROL UNIT
- STEERING ANGLE SENSOR
- HYBRID SYSTEM
- FRONT CAMERA
- REAR-VIEW CAMERA

A new diagnostic system has been developed for the model **Yaris Cross [21>] (P21)**:

- FRONT CAMERA
- REAR-VIEW CAMERA

A new diagnosis of the **NAVIGATOR** system has been developed for the models:

- Aygo X [22>] (B70)
- Crown Kluger [21>] (U7)
- C-HR [23>] (X20)
- Levin [19>] (E21)
- Camry [24>] (XV8)
- Camry Hybrid | NA
- Wildlander [21>] (A5)
- Yaris Cross [21>] (P21)

VOLKSWAGEN

A new diagnostic system has been developed for the model **ID.7 [23>] (ED2)**:

- ABS
- AIRBAG
- PARK ASSIST
- LANE CHANGE ASSIST
- APPROACHING VEHICLE SOUND FOR PEDESTRIANS
- PASSENGER COMPARTMENT BURGLARY PROTECTION CONTROL UNIT
- ELECTRONIC KEY
- A/C
- DISTANCE CONTROL
- 12V VOLTAGE CONVERTER
- GATEWAY
- BATTERY CONTROL MODULE
- BATTERY CHARGER CONTROL MODULE
- SUSPENSIONS
- MULTIFUNCTION CAMERA
- REAR-VIEW CAMERA
- CENTRE ELECTRIC SUNROOF
- ELECTRIC DRIVE
- ELECTRIC DRIVE 2

A new diagnostic system has been developed for the model **ID.7 [24>] (ED5) Tourer**:

- ABS
- AIRBAG
- PARK ASSIST
- LANE CHANGE ASSIST
- APPROACHING VEHICLE SOUND FOR PEDESTRIANS

- PASSENGER COMPARTMENT BURGLARY PROTECTION CONTROL UNIT
- ELECTRONIC KEY
- A/C
- DISTANCE CONTROL
- 12V VOLTAGE CONVERTER
- GATEWAY
- BATTERY CONTROL MODULE
- BATTERY CHARGER CONTROL MODULE
- SUSPENSIONS
- MULTIFUNCTION CAMERA
- REAR-VIEW CAMERA
- CENTRE ELECTRIC SUNROOF
- ELECTRIC DRIVE
- ELECTRIC DRIVE 2

SUPERCAR

FERRARI

A new diagnosis of the **ACTIVE SOUND DESIGN** system has been developed for the models:

- Portofino M [20>] (F164FL)
- Roma [20>] (F169)

A new diagnosis of the **RIGHT BLIND SPOT MODULE** system has been developed for the models:

- Portofino [17>] (F164)
- Portofino M [20>] (F164FL)
- Roma [20>] (F169)
- 812 Superfast [17>] (F152M)
- 812 Superfast Competizione [21>] (F152MVS)
- F8 Tributo [19>] (F142MFL)
- F8 Tributo [19>] (F142MFL) Spider
- GTC4Lusso [16>20] (F151M)
- GTC4Lusso T [17>20] (F151M)
- SF90 Stradale [20>] (F173)
- SF90 Stradale [21>] (F173) Spider

A new diagnosis of the **LEFT BLIND SPOT MODULE** system has been developed for the models:

- Portofino [17>] (F164)
- Portofino M [20>] (F164FL)
- Roma [20>] (F169)
- 812 Superfast [17>] (F152M)

- 812 Superfast Competizione [21>] (F152MVS)
- F8 Tributo [19>] (F142MFL)
- F8 Tributo [19>] (F142MFL) Spider
- GTC4Lusso [16>20] (F151M)
- GTC4Lusso T [17>20] (F151M)
- SF90 Stradale [20>] (F173)
- SF90 Stradale [21>] (F173) Spider

A new diagnosis of the **AUTOMATIC TRANSMISSION** system has been developed for the models:

- Portofino M [20>] (F164FL)
- Roma [20>] (F169)
- SF90 Stradale [20>] (F173)
- SF90 Stradale [21>] (F173) Spider

A new diagnosis of the **PETROL INJECTION** system has been developed for the models:

- Portofino M [20>] (F164FL)
- Roma [20>] (F169)

A new diagnosis of the **RESCUE CALL** system has been developed for the models:

- Portofino M [20>] (F164FL)
- Roma [20>] (F169)
- 812 Superfast Competizione [21>] (F152MVS)
- SF90 Stradale [20>] (F173)
- SF90 Stradale [21>] (F173) Spider

A new diagnosis of the **TELEMETRIC DIAGNOSIS CONTROL UNIT** system has been developed for the models:

- Portofino [17>] (F164)
- Portofino M [20>] (F164FL)
- 812 Superfast [17>] (F152M)
- 812 Superfast Competizione [21>] (F152MVS)
- F8 Tributo [19>] (F142MFL)
- F8 Tributo [19>] (F142MFL) Spider
- GTC4Lusso [16>20] (F151M)
- GTC4Lusso T [17>20] (F151M)
- SF90 Stradale [20>] (F173)
- SF90 Stradale [21>] (F173) Spider

A new diagnosis of the **DRIVING DYNAMICS CONTROL** system has been developed for the models:

- Portofino [17>] (F164)
- Portofino M [20>] (F164FL)
- Roma [20>] (F169)
- 812 Superfast [17>] (F152M)

- 812 Superfast Competizione [21>] (F152MVS)
- F8 Tributo [19>] (F142MFL)
- F8 Tributo [19>] (F142MFL) Spider
- GTC4Lusso [16>20] (F151M)
- GTC4Lusso T [17>20] (F151M)
- SF90 Stradale [20>] (F173)
- SF90 Stradale [21>] (F173) Spider

MASERATI

A new diagnostic system has been developed for the model **GranCabrio [24>] (M189)**:

- ABS
- PETROL INJECTION
- FORWARD AND REVERSE SENSING ADAS SYSTEM
- INSTRUMENTATION
- FOUR-WHEEL DRIVE
- SGW SECURITY GATEWAY MODULE

PORSCHE

A new diagnosis of the **INFORMATION ELECTRONICS SYSTEM 1** has been developed for the models:

- Panamera [17>] (971)
- Cayenne [18>] (9YA)
- 718 Boxster [17>] (982)
- 718 Cayman [17>] (982)

A new diagnostic system has been developed for the model **Panamera [17>] (971)**:

- ABS
- AIRBAG
- LANE CHANGE ASSIST
- LANE CHANGE ASSIST 2
- AUTOMATIC TRANSMISSION
- FRONT ROLL CONTROL SYSTEM CONTROL UNIT
- REAR ROLL CONTROL SYSTEM CONTROL UNIT
- A/C
- DISTANCE CONTROL
- DISTANCE CONTROL 2
- DC/DC CONVERTER
- GATEWAY
- INJECTION 3/BATTERY 2 CONTROL MODULE
- PETROL INJECTION
- BATTERY CONTROL MODULE
- NIGHT VISION SYSTEM
- MULTIFUNCTION CAMERA

- REAR-VIEW CAMERA

NOTICE FOR CUSTOMERS WHO OWN A Windows PC

Dear Customers, to make the most of all the functions in the TEXA IDC5 diagnostic software, you need to update your Personal Computers to the latest version of the operating system Windows 10 or Windows 11.

OTHER NOTICES

Please note that the software updates are not available for unsupported tools.

For more information, please contact your trusted TEXA dealer.

Please note that this document is confidential. Total or partial copying without authorisation by TEXA S.p.A. is forbidden. Data, descriptions and illustrations may vary with respect to those shown here. TEXA S.p.A. reserves the right to make changes of any kind to its products, without prior notice.